



AcuConnect™2.0

Rugged 3G Mobile Broadband Combination of Modem & Router



Disclaimer

Acura Embedded Systems Inc. takes every care in the preparation of this document, but no guarantee is given as to the correctness of its contents. Our products are under continual improvement and we reserve the right to make changes without notice. The manufacturer makes no representations or warranties with respect to the contents hereof and specifically disclaim any implied warranties of merchantability or fitness for any particular purpose. The manufacturer reserves the right to revise this publication and to make changes from time to time in the content hereof without obligation of the manufacturer to notify any person of such revision or changes.

In general, the manufacturer will not be liable for loss of data or other direct, indirect, special, incidental or consequential damages arising from the use or inability to use the product or documentation, even if advised of the possibility of such damages.



Preface

Copyright

The material in this document is the intellectual property of Acura Embedded Systems Inc. This publication, including all photographs, illustrations and software, is protected under international copyright laws, with all rights reserved. Neither this manual, nor any of the material contained herein, may be reproduced without written consent of Acura Embedded Systems Inc.

Trademark Recognition

Microsoft, MS-DOS and Windows are registered trademarks of Microsoft Corp.

IBM PC is a registered trademark of International Business Machines Corporation.

Intel, MMX, Pentium, Pentium-II, Pentium-III, Pentium-4, Celeron, Core™ 2 Duo are registered trademarks of Intel Corporation.

AWARD is a registered trademark of AWARD International Inc.

Other product names used in this manual are the properties of their respective owners and are acknowledged

Table of Content

1. Package Contents.....	1
2. System Requirements.....	1
3. WiFi Requirement.....	1
4. Features.....	2
5. AcuConnect™2.0 Overview.....	3
5.1 Rear View.....	3
5.2 Front View.....	4
5.3 Side View.....	4
5.4 View with Protection Cover.....	5
5.5 Mount Plates.....	5
6. Quick Setup.....	6
6.1 SIM Card plug in.....	6
6.2 Setup 3G.....	7
6.3 Reboot Setting.....	8

1. Package Contents

Important: Check the contents of this box first.

Contents list

- AcuConnect 2.0 3G Wireless Broadband Modem+Router
- Wi-Fi Antenna
- Mount Plates with M3/6mm screws
- RJ45 Ethernet Cable
- Power Cable
- Quick Reference Manual
- Manual CD

2. System Requirements

- Compatible 16bit/32bit PCMCIA or USB 3G modem card with activated service
- Computer with Windows 2000, XP, Vista, Macintosh, or Linux-based operating systems with an installed Ethernet adapter.
- Internet Explorer 6.0 or Netscape Navigator™ Version 7.0 or above (for accessing web-based configuration settings)

3. Wi-Fi Requirement

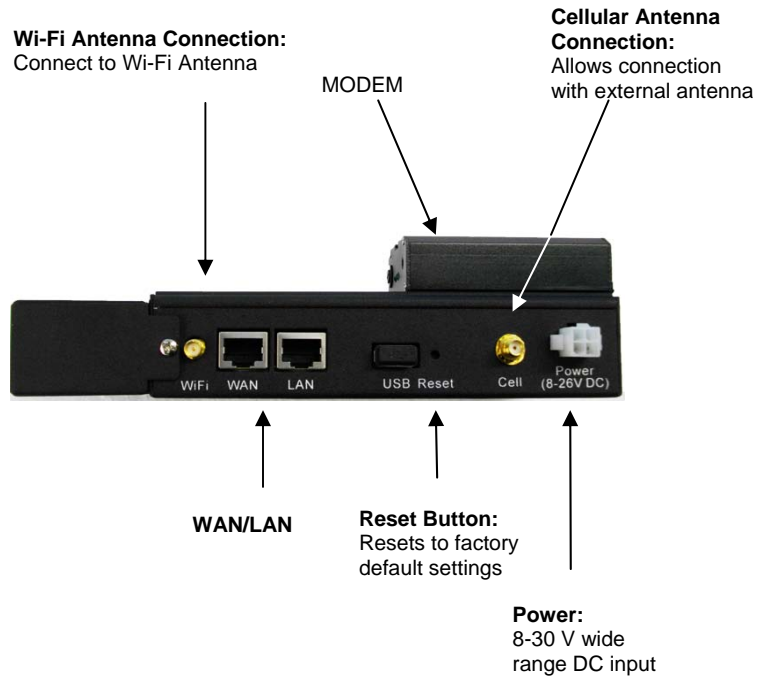
- 802.11b/g adapter

4. Features

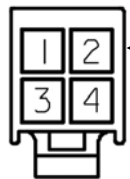
- Quick and easy setup
- Automatic connection failover to 3G connection if Ethernet WAN connection fails.
- Fully compatible with the 802.11g IEEE standard to provide a wireless data transfer rate of up to 54Mbps.
- Backwards compatible with the 802.11b standard to provide a wireless data rate of up to 11Mbps.
- Operates in the 2.4GHz frequency range.
- Advanced Firewall features
 - Supports NAT with VPN pass-through, as well as the following security features:
 - MAC Filtering
 - IP Filtering
 - Port Scheduling
- Web-based configuration pages for easy setup and management.
- Equipped with 2 10/100 Ethernet ports for LAN and WAN access, a Type II PCMCIA card (16bit and 32bit) slot, and a USB port for 3G network connections. Express Cards with a universal caddy are also compatible.
- External Antenna Connection
- 8-30 V wide range DC input power

5. AcuConnect™ 2.0 Overview

5.1 Rear View

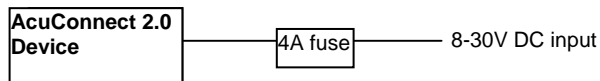


Note:



Power Cable connector:

Pin 1: +8-30V input
Pin 2: Ground



5.2 Front View



3G LED: Lights up green when power is on

LAN LED: Lights up green when a local Ethernet cable is connected and blinks indicate activity

WAN LED: Lights up green when WAN is connected

Wi-Fi LED: Lights up green when a connection to the WLAN is available

5.3 Side View

PCMCIA SLOT



5.4 View with Protection Cover



Protection Cover:
This cover protects PCMCIA modem

Dimension of AcuConnect™ 2.0

With cover:

20.5cm x 11.9cm x 5.4cm (L x W x H)

Without cover:

15.7cm x 11.9cm x 5.4cm (L x W x H)

5.5 Mount Plates

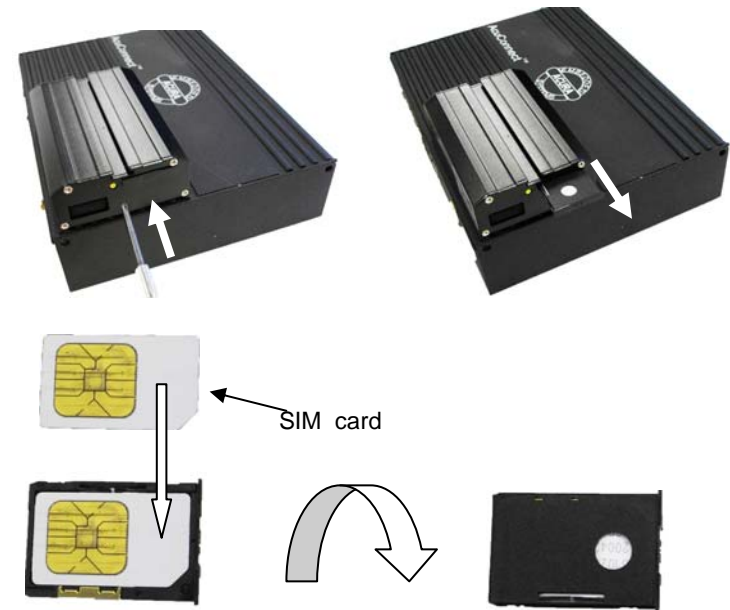


Mount Plates:
Easy to mount and also designed for DIN Rail adapter.
Screws: M3/6mm
Dimension: 4.5cm x 7.1cm

6. Quick Setup

6.1 SIM card plug in

press yellow button on the modem and Sim Card holder will pull out.



Plug Sim holder with SIM card in the modem slot .



6.2 Setup 3G

1. Open a web-browser.
2. Type in the **IP Address** (<http://192.168.123.254>) of the Wireless WAN Mobile Broadband Router
3. Type "admin" in the Password field.

APN setting:
For Bell: inet.bell.ca
For Telus: sp.telus.com
For Rogers: internet.com

Dial Number:
 *99#

[BASIC SETTING]→[Primary Setup]→ Select 3G→ click [Save] button

6.2 Reboot Setting

Step 1. Add new schedule rule

[ADVANCED SETTING]→[Scheduling]→Click [Add New Rule] button to setup schedule rule.

Week Day	Start Time (hh:mm)	End Time (hh:mm)
Sunday		
Monday		
Tuesday		
Wednesday		
Thursday		
Friday		
Saturday		
Every Day	12 : 30	12 : 50

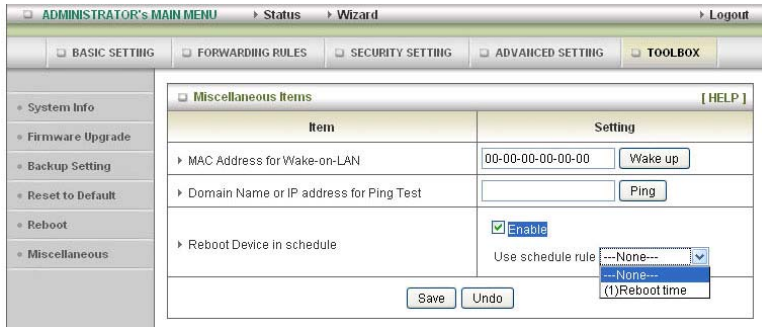
After setting up Name of Rule and time click [Save] button to save these changes.

Step 2. Enable Schedule



Check the **[Enable]** option for Schedule then click **[Save]** button.

Step 3. Enable Reboot Device in schedule



[Toolbox] → **[Miscellaneous]** → check **[Enable]** for Reboot Device in schedule → Select schedule rule **[Reboot time]** → click **[Save]** button to save settings.

ACURA INSTALLATION INSTRUCTIONS

The following instruction is designed to assist the technician or customer in the basic steps of installing Acura products and makes the assumption that commonsense and previous experience will aid in the installation. Safety and caution must always take precedence in the installation of any electrical or mechanical system. The correct tools, parts, fasteners, safety equipment as well as any instructions, diagrams and schematics must be gathered, reviewed or made available prior to beginning the process of installation.

The installer is required to prepare in advance the work area and see that the electrical or mechanical needs of the project are in place before starting and that any other possible interference are addressed. A review of the Installation Check List is critical since this list needs to be checked off and a copy sent back to the supplier so it can be attached to the Customer file. All projects require the filling out of appropriate forms or else warranty may be limited.

The list and/or these Installation Instructions are not designed to be exhaustive or restrictive they are part of a process of total quality management and will help the installer to be in control of the project.

Please refer to caution and installation guides provided with each piece of equipment, component or accessory.

In order to receive the best performance out of a new Acura computer system all components should be installed in a way that allows for ease of operation by customer's trained personnel or trainer under regular operating conditions.

Please take a moment to check off the following boxes so the undersigned can verify that the installation is complete and operational. If something is not working as initially configured and tested please inform the installer immediately so that the problem can be fixed as promptly as possible. Follow up with a Corrective Action Report (CAR) where appropriate.

Below are some points or conditions to watch out for: (Please initial them off as you proceed)

- All parts, components and accessories are received and prepared for installation
- Areas to receive equipment are clear and free from obstruction
- The mounting system selected is appropriate for the apparatus.
- Before attaching brackets make sure there are no hidden fluid or wiring obstructions
- Use appropriate fasteners and backing as required.
- Ensure **Power Sources** are identified and adequate to operate system without over taxing available battery reserve. An Amp hour survey should be completed and additional battery capacity addressed. Power is direct from battery to a distribution fused block.

Before attaching any wiring be sure that power leads are correctly fused and correctly identified (+ or -) as well as correct voltage and wire size (12 ga power supply minimum) **Caution:** Incorrect connection of wires will affect the electronics and will void warranty – (Burnt wiring and blown circuitry is evidence of improper installation)

Fasteners will require lock washers, washers, isolation or proper grounding

Computer is adequately hidden and out of the way yet readily accessible with good ventilation.

Touch screen is mounted securely to the apparatus.

Touch screen is in a location where desired user/s can comfortably operate the unit

Unit is fully functional while the engine or radio of the apparatus is running and free of RF

Connections, components or accessories are not impeding the duties of personnel

Factory operating system (locked) and all factory applications are functional

All service personnel and trainers understand the components and wiring for all applicable systems as well as In-line fuses are accessible and their locations are known

Administrative controls for systems are in the hands of trained service personnel

Note: Check twice install once.

For Assistance call your sales and service representative first for guidance.

Print Name Signature of Chief or Representative Date of signature

Print Name Signature of Authorized Installer Date of signature

Customer Name: _____

Location: _____

Serial Number: _____

VIN Number: _____

Unit Number: _____

Date Installed: _____

Who Installed: _____

Contact Number: _____

Notes:



With the unique set of products, Acura Embedded Systems remains committed to its goal of providing trouble-free and customer-friendly service. A special customer service unit has been set up specifically to cater to our esteemed customers' needs.

Technical Support:

North American **Technical support contact your Salesperson**

Cal USA/CANADA: 1-866-528-2214

AU/NZ: 3 5284 0222 UK: 8453 455 734

support@acuraembedded.com

Mailing address:

Acura Embedded Systems Inc.

Unit #1, 7711-128th Street, Surrey, BC V3W 4E6, CANADA

Ph: (604) 502-9666 Fax: (604) 502-9668

(RMA number required)